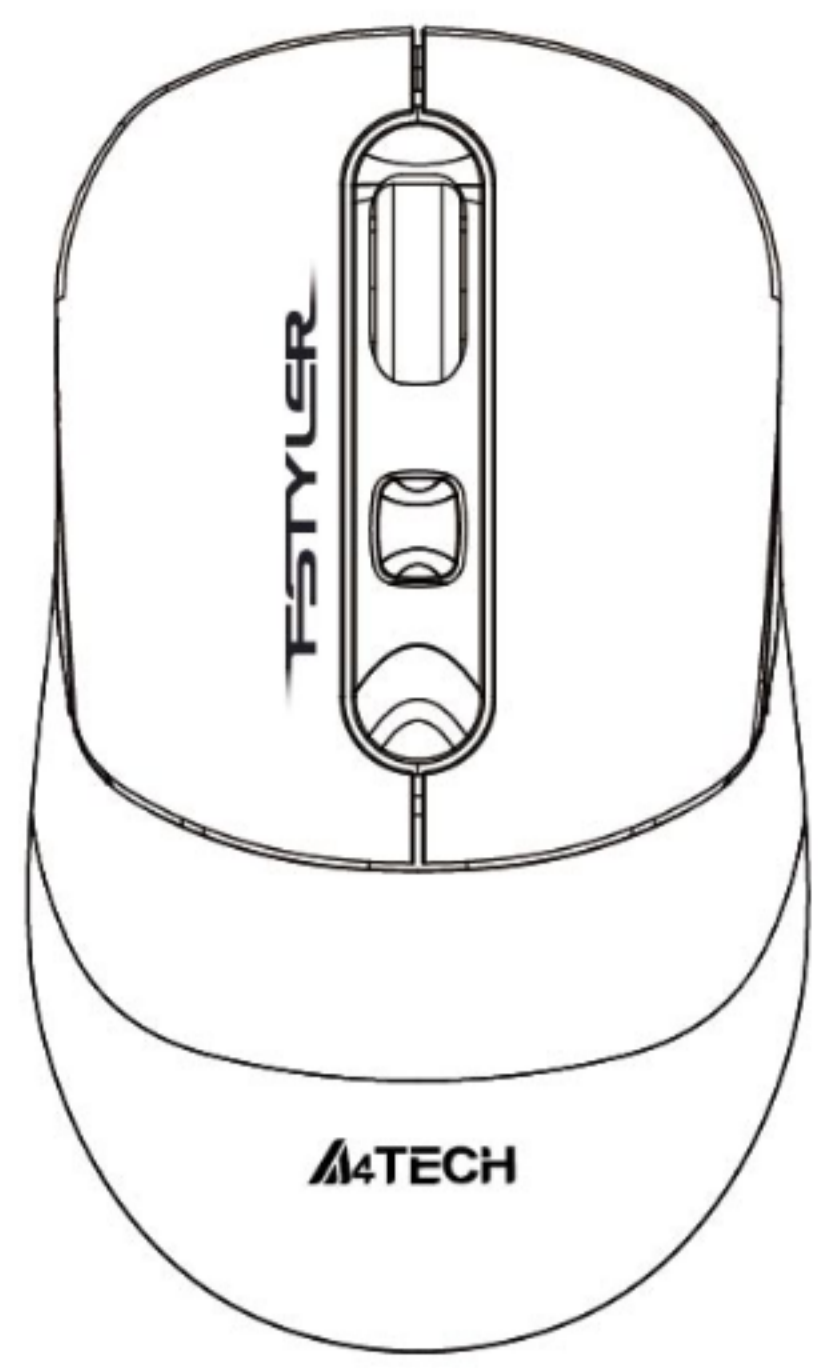


QUICK START GUIDE



FB10C / FB10CS

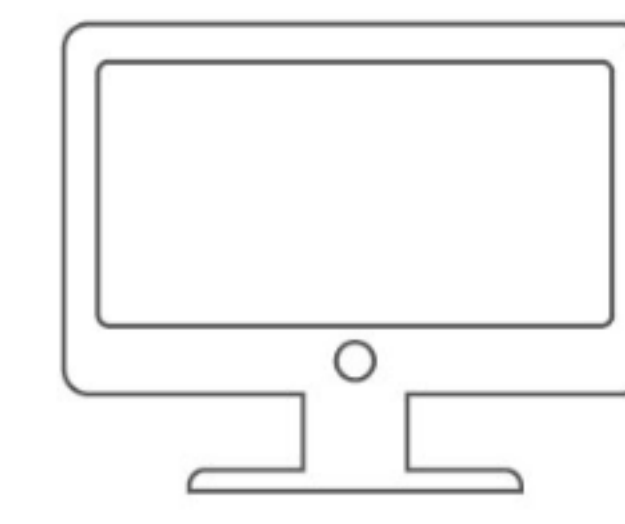


FSTYLER COLLECTION

INDICATOR



MOUSE



2.4G DEVICE



BLUETOOTH DEVICE 1

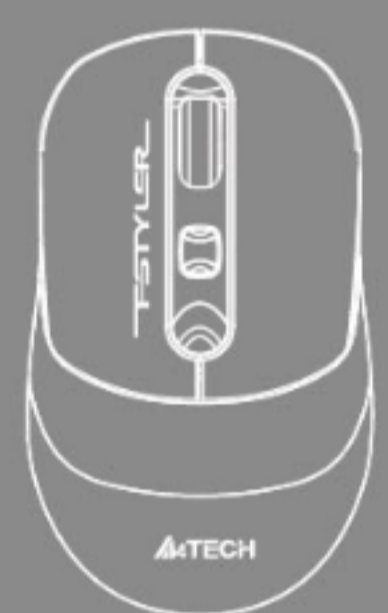


BLUETOOTH DEVICE 2

Indicator	Red and Blue Light	Blue Light	Red Light
Switch Device: Short-Press 1S	Flashes Quickly 10S	Solid Light 5S	Solid Light 5S
Pair Device: Long-Press For 3S	No Need to Pair	Pairing: Flashes Slowly Connected: Solid Light 10S	Pairing: Flashes Slowly Connected: Solid Light 10S

The above indicator status is before Bluetooth paired. After the Bluetooth connection succeed, the light will turn off after 10S.

WHAT'S IN THE BOX



Mouse



Nano USB Receiver

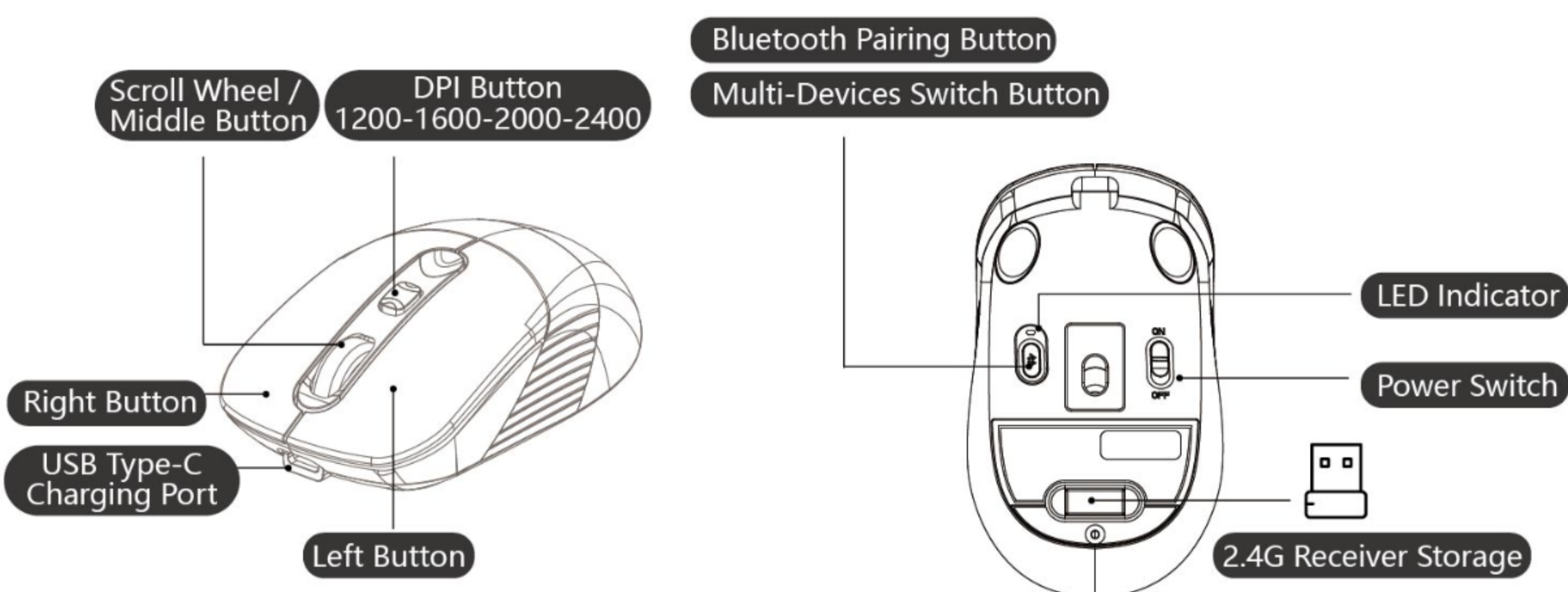


Charging Cable (Type-C)



User Manual

KNOW YOUR PRODUCT

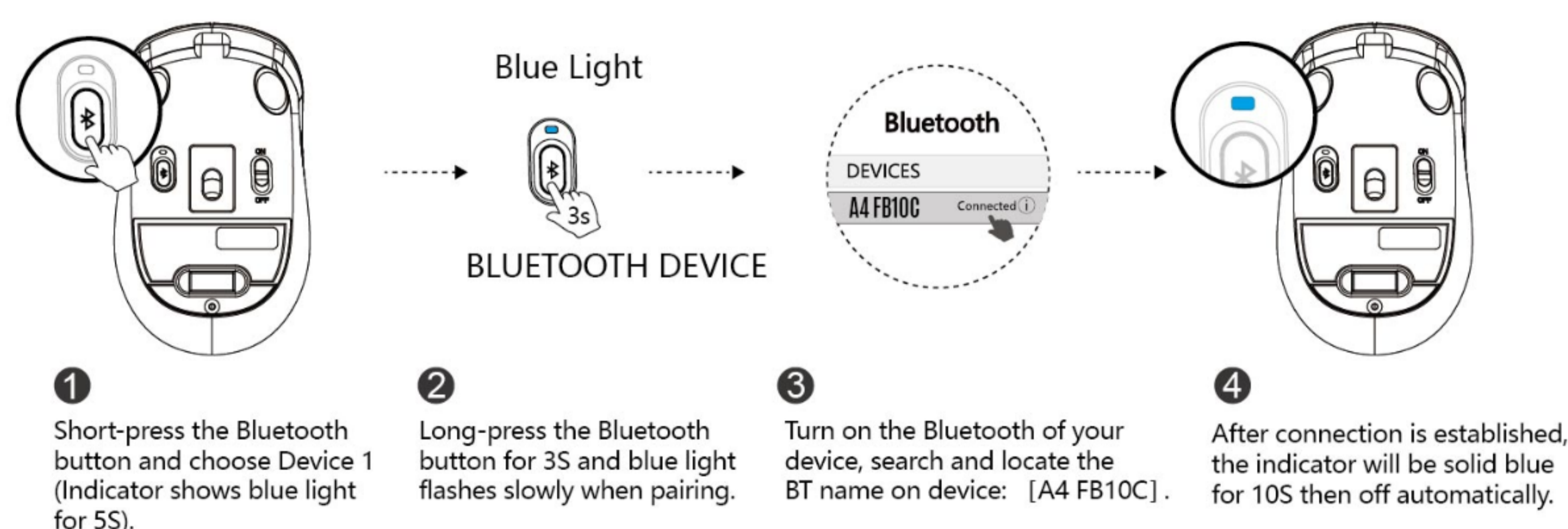


CONNECTING 2.4G DEVICE



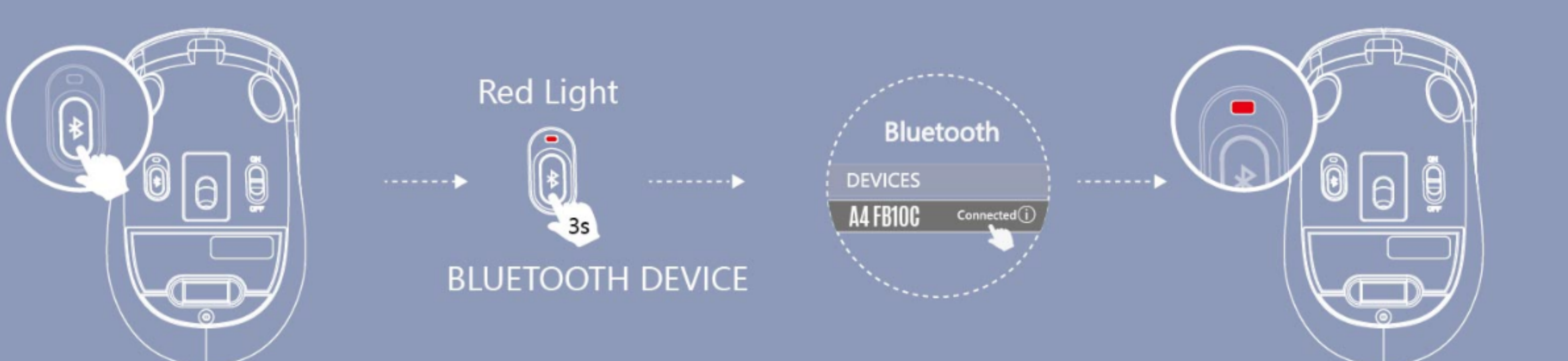
- 1 Plug the receiver into the computer's USB port.
- 2 Turn the mouse power switch to on.
- 3 Indicator: Red and blue light will flash (10S). The light will be off after connected.

CONNECTING BLUETOOTH DEVICE 1 (For Mobile Phone/Tablet/Laptop)



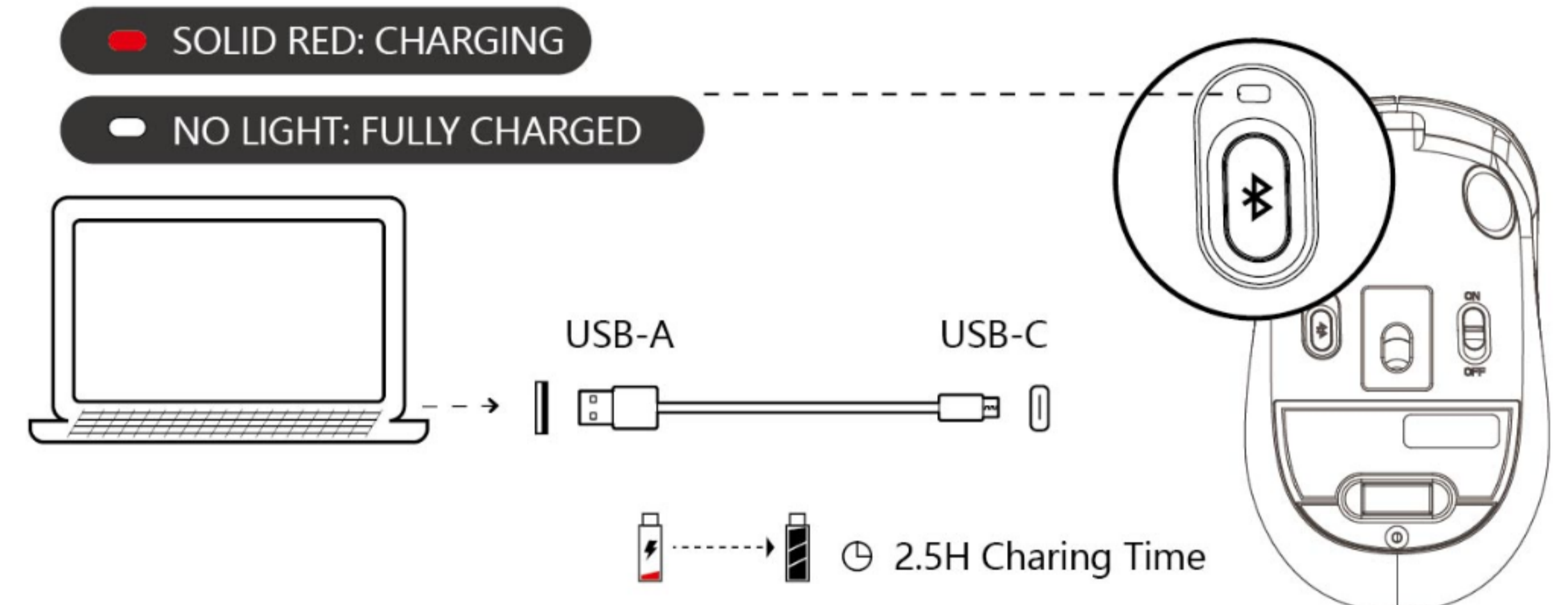
- 1 Short-press the Bluetooth button and choose Device 1 (Indicator shows blue light for 5S).
- 2 Long-press the Bluetooth button for 3S and blue light flashes slowly when pairing.
- 3 Turn on the Bluetooth of your device, search and locate the BT name on device: [A4 FB10C].
- 4 After connection is established, the indicator will be solid blue for 10S then off automatically.

CONNECTING BLUETOOTH DEVICE 2 (For Mobile Phone/Tablet/Laptop)

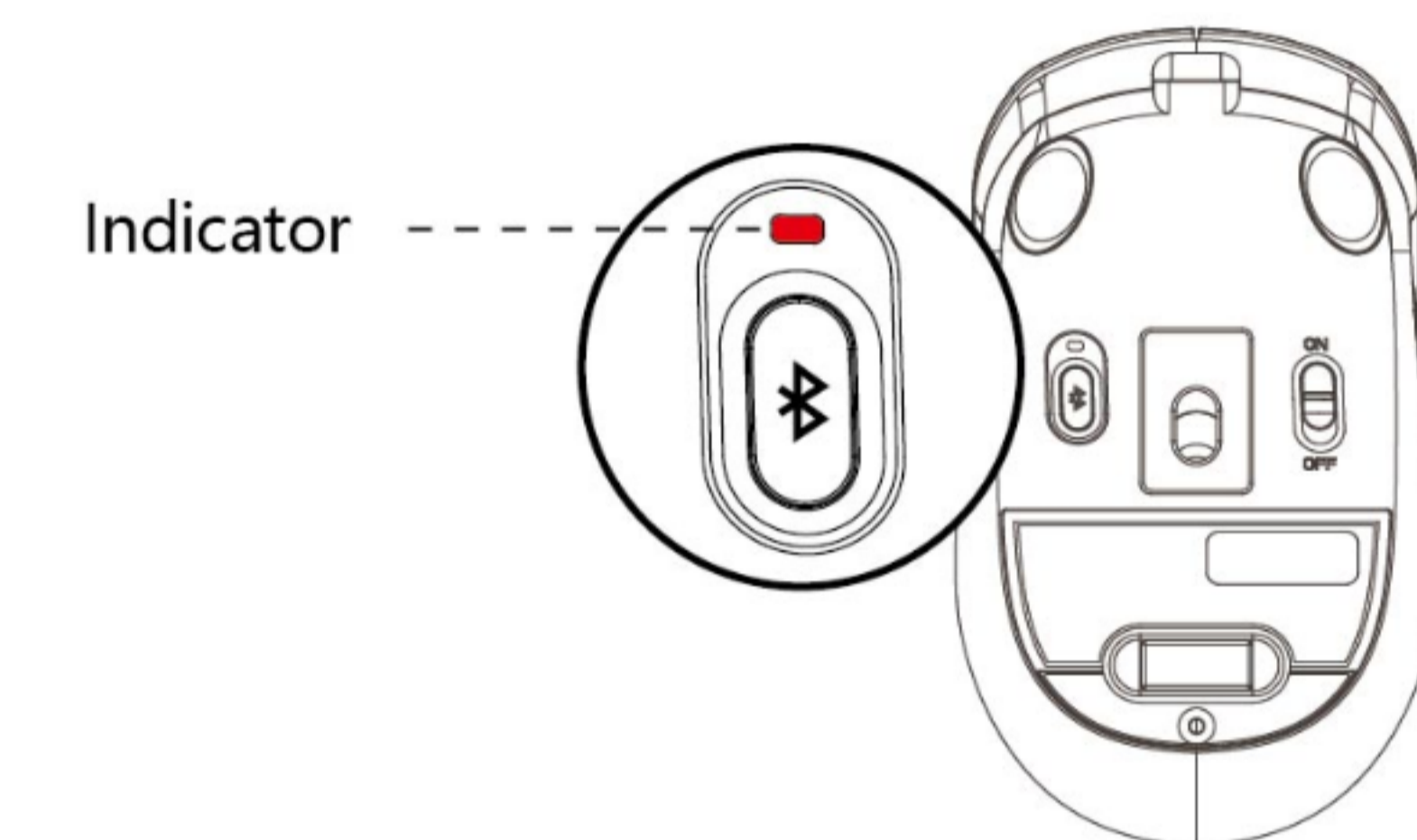


- 1 Short-press the Bluetooth button and choose Device 2 (Indicator shows red light for 5S).
- 2 Long-press the Bluetooth button for 3S and red light flashes slowly when pairing.
- 3 Turn on the Bluetooth of your device, search and locate the BT name on device: [A4 FB10C].
- 4 After connection is established, the indicator will be solid red for 10S then off automatically.

CHARGING & INDICATOR



LOW BATTERY INDICATOR



Flashing Red light indicates when the battery is below 25%.

Q & A

- Question** How many total devices can be connected at a time?
Answer Interchange and connect up to 3 devices at the same time. 2 Devices with Bluetooth +1 Device with 2.4G Hz.
- Question** Does the mouse remember connected devices after power off?
Answer The mouse will automatically remember and connect last device. You may switch the devices as you choose to.
- Question** How do I know what device is currently connected to?
Answer When the power is turned on, the indicator light will be displayed for 10S.
- Question** How to switch connected Bluetooth devices?
Answer Repeat the procedure of connecting Bluetooth devices.

WARNING STATEMENT

- The following actions may/will cause damages to the product.
1. To disassemble, bump, crush, or throwing into fire, you may cause irrefutable damages in event of the lithium battery leakage.
 2. Do not expose under the strong sunlight.
 3. Please obey all local laws when discarding the batteries, if possible please recycle it. Do not dispose it as household garbage, it may cause a fire or an explosion.
 4. Please try to avoid charging in the environment below 0°C.
 5. Do not remove or replace the battery.



www.a4tech.com



Scan for E-Manual